

# TOWN OF *Mesilla* NEW MEXICO







Mike Groves

# Welcome BIENVENIDOS



## STAY AND ENJOY HISTORIC OLD MESILLA HACIENDA STYLE!



ARRACHERA  
STEAK



575.652.4953

HaciendaDeMesilla.com

1891 Avenida de Mesilla, Mesilla, NM

CASUAL ELEGANCE  
IN DINING & LODGING

It is with great pleasure that I welcome you to the Town of Mesilla, where events are not a trend, they're tradition and where history is alive and well!

The Town of Mesilla is one of the oldest and most visited communities in southern New Mexico, where the hospitality is warm and the chile is hot. It is no wonder The Culture Trip, a renowned international online magazine, named Mesilla one of the top 10 small towns in the country to visit. The Town of Mesilla was also named the 2013 and 2014 Official Best Vacation Getaway in New Mexico. It is easy to see why, with over fifty unique stores, boutiques & galleries, award winning restaurants and cafes, all within walking distance of one another.

Our plaza, the heart of Mesilla, has been witness to many historical events, most significant was El Tratado de La Mesilla, the signing of the Gadsden Purchase, which transferred lands, including the Town of Mesilla, from Mexico to the United States in 1854. Today, many traditional events are still held in the plaza, including our annual Cinco de Mayo & Diez y Seis de Septiembre Fiestas, our three day Día de Los Muertos Celebration and our annual Christmas Eve Lighting of the Luminarias ceremony.

So, leave your passport and worries at home and come visit us. Old Mesilla, shop and dine...the rest is history!

Sincerely,

*Nora L. Barraza*  
Nora Barraza  
Mayor, Town of Mesilla

Es para mí un gran honor darle la bienvenida al pueblo de Mesilla, donde los eventos no son una moda sino una tradición y donde la historia está viva y en excelente forma.

El pueblo de Mesilla es una de las comunidades más antiguas y visitadas en el sur de Nuevo México, donde la hospitalidad es cálida y el chile es muy picante. No es ninguna sorpresa que The Culture Trip, una renombrada revista digital internacional, colocara a Mesilla como uno de los diez pequeños pueblos por visitar en el país. El pueblo de Mesilla fue también nombrado el Mejor Escape Vacacional de Nuevo México en 2013 y 2014. Es fácil ver por qué: cuenta con más de cincuenta tiendas, boutiques y galerías únicas, así como con restaurantes y cafés galardonados, todos ellos en una distancia caminable.

Nuestra plaza, el corazón de Mesilla, ha sido testigo de diversos eventos históricos, principalmente el Tratado de La Mesilla, la firma de la Compra Gadsden, por el cual se traspasaron territorios de México a los Estados Unidos en 1854, incluyendo el pueblo de Mesilla. Al día de hoy, la plaza alberga diversos eventos tradicionales, incluyendo nuestras fiestas anuales del Cinco de Mayo y del Dieciséis de Septiembre, nuestra celebración del Día de Muertos durante tres días y nuestra ceremonia anual del Encendido de las Luminarias en Nochebuena.

Así que deje su pasaporte y preocupaciones en casa y visítenos. Antiguo Mesilla, compra y come... ¡el resto es historia!

Sinceramente

*Nora L. Barraza*  
Nora Barraza  
Mayor, Town of Mesilla



# What's INSIDE

- 8** HISTORY
- 12** TOURS
- 14** DAY TRIPS
- 18** MERCHANTS
- 20** MAP
- 22** CALENDAR OF EVENTS
- 24** FARMER'S MARKET
- 25** POLITICAL HISTORY
- 26** A LITTLE MORE HISTORY
- 28** GALLERIES
- 29** BILLY THE KID
- 30** DINING
- 32** EXPERIENCE MESILLA
- 34** ACCOMMODATIONS
- 36** MUSEUMS
- 38** FACILITIES

COVER PHOTO BY ANDREA WERGE



**OPEN**  
Mon-8:00am-2:30pm  
Tue-Sun-8:00am-9:00pm

1950 Calle del Norte  
Mesilla, NM

**575-526-9631**

[www.andelerestaurante.com](http://www.andelerestaurante.com)

**Freshly  
made  
Chips  
and  
Salsa Bar**

Voted Best  
Green Enchiladas

MAP  
8



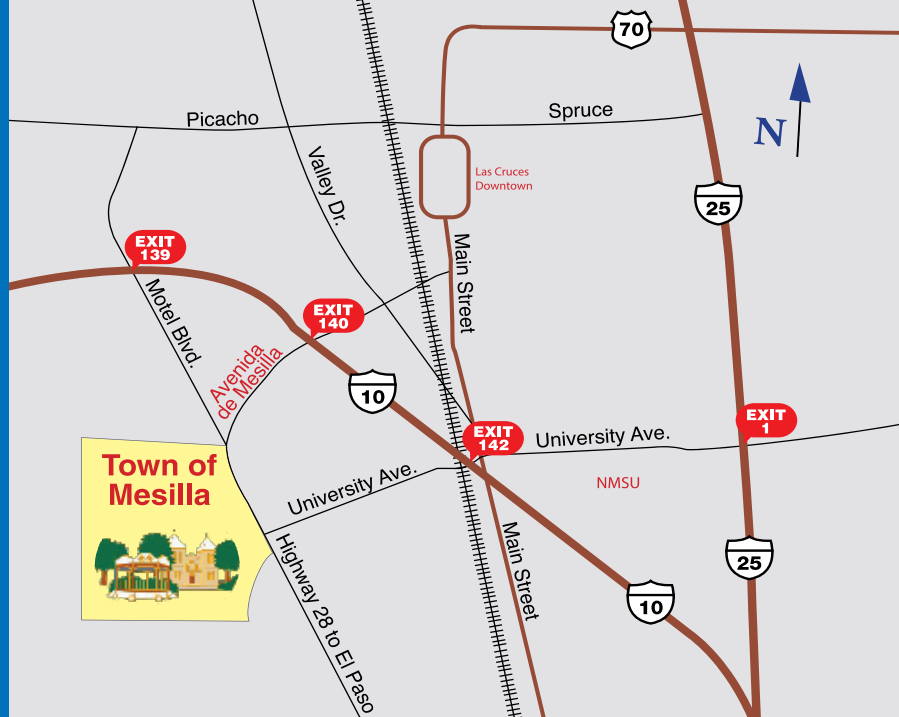
- Mexican Hot Dogs, Burgers & Top-Dog Mexican Food.
- Big Selection of Draft & Bottled Beer.
- Well-Behaved Pets on Leash Always Welcome on Patio.

[www.andelerestaurante.com](http://www.andelerestaurante.com)  
Open Daily • 11am-9pm

**575-526-1271**

1983 Calle Del Norte • Mesilla, NM

MAP  
9



## EXITS TO OLD MESILLA

### FROM ALBUQUERQUE - I-25 EXIT 1

Turn right on University Avenue  
Drive West approximately 6 miles

### FROM EL PASO - TAKE I-10 WEST

Approximately 40 miles to Mesilla Exit 140,  
Turn left on Avenida de Mesilla - 1 Mile

### FROM PHOENIX I-10 - MESILLA EXIT 140

Turn right on Avenida de Mesilla - 1 Mile

### US 70

Take I-25 South to I-10 West,  
to Mesilla Exit 140,  
Turn left on Avenida de Mesilla - 1 Mile

## Awards and Recognitions

- 2018 FOURTEEN CHURCHES THAT WILL LEAVE YOU SPEECHLESS  
(OnlyInYourState.com)
- 2018 THE 8TH COZIEST TOWN IN NEW MEXICO  
(OnlyInYourState.com)
- 2017 BUDGET FRIENDLY ROAD TRIPS IN NM
- 2016 TOP 6 BEST HISTORIC PLAZAS IN NM
- 2013/2014 OFFICIAL BEST VACATION GETAWAY
- TOP 10 SMALL TOWNS TO VISIT



### VISITOR'S CENTER

2231 Avenida de Mesilla,  
Mesilla NM, 88046  
Open Daily from:  
8:00am to 5:00pm  
(575) 524-3262

FOLLOW US ON:



[www.mesillanm.gov](http://www.mesillanm.gov)

### Gadsden Museum Celebrating 90 years

**1875 Boutz Rd**  
Shown by appointment (575) 526-6293  
Established in 1931 and dedicated to Col. Albert J. Fountain. Artifacts dating back to 1500's. Replica of the jail housing Billy the Kid.

## RISTRAMNN CHILE CO.

575-526-8667  
[www.RistramanChile.com](http://www.RistramanChile.com)  
[Alexander873@me.com](mailto:Alexander873@me.com)  
2531 Avenida de Mesilla  
La Mesilla, NM 88005

Nine generations of preserving Mesilla. ¡Viva La Mesilla!

## SILVER ASSETS

in Old Mesilla  
Est. in 1989 - Locally  
Owned & Operated

1948 Calle de Santiago  
Mesilla, NM 88046  
575-523-8747  
[www.silverassetsnm.com](http://www.silverassetsnm.com)





**T**he history of Mesilla is a complex one and there are many accounts of how things actually happened. What we know for sure is that hundreds of years later, Mesilla has maintained its quaint, charming appeal of long ago.

In the early to mid 1800s, the Camino Real Trail that traveled from Chihuahua to Santa Fe, and the Butterfield Stagecoach from San Antonio to San Diego, turned the region into a hub for commerce and transportation in the region. At this point, the area of Mesilla was still uncharted territory; not many settlers had yet made it their home.

It was the Treaty of Guadalupe Hidalgo in 1848 that attracted early settlers to Mesilla and thus began populating the town. It was established as a colony by the early 1850s, around the time that the United States and Mexico settled the boundary dispute that arose from the Treaty of Guadalupe Hidalgo. The settlement, known as the Gadsden Purchase, was effectuated on November 16, 1854 in Mesilla by taking down the Mexican flag and raising the United States flag.

In late July 1861, 300 Texas troops led by Confederate Col. John Baylor captured Fort Fillmore, just outside of Mesilla. After defeating the Union troops Baylor named the town of Mesilla as the capital of the new Confederate Territory of Arizona. The Civil War ended in Mesilla in 1862 after Colonel Baylor and the confederate troops retreated to Texas.

By the 1870s Mesilla was in her prime and there were several stores, doctors, lawyers, carpenter shops as well as other establishments. However, the hustle and bustle of Mesilla not only attracted businessmen and commerce, it also attracted outlaws like Billy the Kid. It was in Mesilla that the Kid was tried and sentenced to death by hanging in 1881.

With the booming commerce and constant traffic, Mesilla was actually at one time the largest U.S. town between San Antonio and San Diego. But, the once thriving town, and

the obvious choice for a railroad, was stunted when, in 1881, it was decided that the incoming railway would be constructed through the neighboring town of Las Cruces instead.

Today, many of Mesilla's residents are direct descendants of its early settlers. The town and its people are a true representation of the community's Native-American, Spanish, Mexican and Anglo-American heritage.







Southern New Mexico's  
Premiere Boutique since 1981!

Mercado de Mesilla  
575-525-9177  
[www.eiboutique.com](http://www.eiboutique.com)



**Scan Us**







***Exquisite ornaments, gifts  
& holiday decor for any season***

*Just a block east of the Historic Mesilla Plaza*

*A Christmas Shoppe offering a unique  
and enjoyable year-round seasonal  
shopping experience.*

**(575) 524-3333**  
**2402 Avenida de Mesilla**  
**[www.seasonsdemesilla.com](http://www.seasonsdemesilla.com)**





# Historia

## De La Mesilla

La historia de Mesilla es compleja y existen diversas versiones de cómo y cuándo sucedieron las cosas. Lo que tenemos por cierto es que cientos de años más tarde, Mesilla ha mantenido su pintoresco encanto de antaño.

Desde principios y hasta mitades de los años 1800, el Camino Real de Tierra Adentro que iba desde Chihuahua hasta Santa Fe y la diligencia Butterfield de San Antonio a San Diego, convirtieron a la región en un eje comercial y de transporte. En este punto, el área de Mesilla era territorio inexplorado y no muchos colonos se habían asentado allí.

El tratado de Guadalupe Hidalgo fue lo que atrajo en 1848 a los primeros colonos a Mesilla, comenzando así la población del lugar. Se estableció como colonia a principios de la década de 1850, durante los tiempos en que Estados Unidos y México mantuvieron una disputa territorial que surgió a partir del Tratado de Guadalupe Hidalgo. El acuerdo, conocido como la Venta de la Mesilla (o la compra de Gadsden en Estados Unidos) se realizó el 16 de noviembre de 1854 en Mesilla al retirarse la bandera mexicana e izarse la norteamericana.

A finales de julio de 1861, trescientas tropas texanas encabezadas por el coronel confederado John Baylor tomaron el Fuerte Fillmore, en las afueras de Mesilla. Tras vencer a las tropas de la Unión, Baylor nombró al pueblo de Mesilla como capital del nuevo Territorio Confederado de Arizona. La Guerra Civil terminó en Mesilla en 1862, luego de que el coronel Baylor y las tropas confederadas se retiraran a Texas.

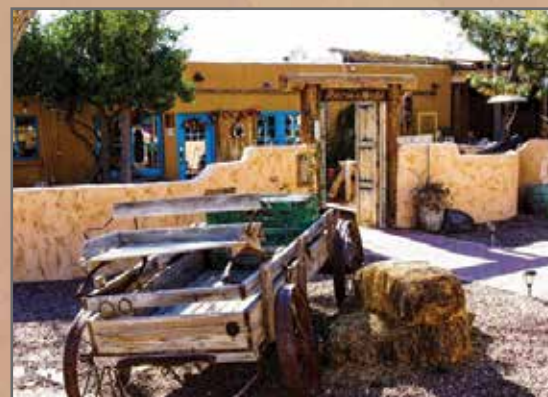
Para la década de 1870, Mesilla estaba en sus mejores momentos y contaba con tiendas, médicos, abogados, carpinterías y otros establecimientos. Sin embargo, el ir y venir de Mesilla atrajo no sólo a hombres de negocios y comerciantes, sino también a forajidos como Billy The Kid. Fue en Mesilla donde el Kid fue llevado a juicio y sentenciado a muerte en la horca en 1881.

Con el comercio floreciente y el tráfico constante, Mesilla fue de hecho la población norteamericana más grande entre San Antonio y San Diego. Pero la alguna vez floreciente ciudad y obvia opción para recibir al ferrocarril quedó pasmada cuando, en 1881, se decidió que las vías se construyeran a través de Las Cruces.

Debido a su importancia histórica tanto para el estado como para la nación, la Antigua Plaza de Mesilla fue declarada monumento estatal de Nuevo México el 10 de septiembre de 1957. Inicialmente se enlistó en el Registro Nacional en enero de 1982 como Punto Histórico Nacional. Luego, el distrito histórico de Mesilla fue añadido al Registro Nacional en febrero de 1985.

Al día de hoy, muchos de los residentes de Mesilla son descendientes directos de los primeros colonos. El pueblo y su gente son una verdadera representación del patrimonio nativoamericano, español, mexicano y angloamericano de la comunidad.

# FRESH. LOCAL. FUN.



Discover a bit of history in Old Mesilla's historical transportation block, located just south of the main plaza. There you will find the *Rincon de Mesilla*, a stylish coffee house and artisan market. Our coffee house is situated along the historical stagecoach routes of the Wells Fargo Express and Butterfield Overland mail, dating back to the mid 1800's. With its rustic ambiance featuring an adobe structure, wooden beams and volcanic rock fireplace, *Rincon de Mesilla* provides for both an historical and cultural experience offering both indoor and outdoor seating.



# Rincon

## DE MESILLA

### Café & Mercado



2488 Calle De Guadalupe  
Mesilla, NM 88005  
575-556-9510







# Tours

## and Day Trips



### BASILICA OF SAN ALBINO

On the north end of the Plaza, originally built of adobe in 1855, the church was rebuilt to its present structure in 1906. It became a basilica on November 1, 2008. Visiting hours vary during the year, see website for accurate dates.



### SOUTHWEST EXPEDITION'S

Offering custom, FUN tours with professional guides that always have your safety and well being in mind. Southwest Expeditions can organize your tour from 4 to 30 guests. Transportation is included. Local tours include, aerial tours, plane tours, jeep tours/van tours, Leasburg Dam river runs, Mesilla river runs, star parties (nights), bike rentals, bike tours and Billy the Kid reenactments on the Plaza. Major activities and overnight accommodations from outdoor camping, quaint bed and breakfast lodging to luxury hotels, can be part of your adventure getaway with Southwest Expeditions.

### BILLY THE KID TOUR

(Outlaw Rock at Stolen Horse Canyon, Mesilla Jail at Billy the Kid Gift Shop, Historic Fort Selden). This tour follows Billy the Kid's trail past his most notorious hideouts, one at the Old Mesilla plaza and the other at Outlaw Rock in the Organ Mountains-Desert Peaks National Monument. Outlaw Rock is in Faulkner Canyon (also known as Stolen Horse Canyon) where Billy and his gang left their mark, then back to Old Mesilla where Billy escaped from jail on the historic plaza. Western history and cultural flair meet natural beauty in Faulkner Canyon and the Robledo Mountains Wilderness.



### LA MORENA WALKING TOURS

Walking Tours of Historic Mesilla. Dressed in the style of a Mexican Revolutionary woman of the 1800's, Preciliana Sandoval, a fifth-generation native historian invites you to take a walking tour of Mesilla. Visit historic battle sites. Hear romantic ghost stories and feel the centuries old grace of Mesilla.

### FRONTIER ADVENTURES

Relive the enchantment of the old west. Your authentic stagecoach is ready for that special occasion. An assortment of horse-drawn vehicles provide you and your group with an exclusive day or evening. Frontier Adventures can accommodate any size group at our location or yours. Delight and enjoy the experience, while we provide delicious food and premier entertainment to your specifications...an unforgettable adventure for the exceptional group of family outing!



### MESILLA BOOK CENTER

Books about the West, Mexico, Horses, Cowboys, Native Americans, & more. Children's books & toys, gifts and more. "Some of the best books never make the bestseller lists"

(575) 526-6220 Mon.- Sat. 11am-5:30pm  
2360 Calle de Principal Sun. 1pm-5pm



### The Potteries Dinnerware, Lighting and Paintings

The Potteries is a working artist studio. Bill Cook makes architectural lighting from earthenware clay he digs himself. Janice Cook has sculpture and porcelain dinnerware in bright colors. Jeanne Rundell is a painter known for her whimsy.

(575) 524-0538  
2260 Calle de Santiago, Box 64  
[www.thepotteriesmesilla.com](http://www.thepotteriesmesilla.com)

Friday & Saturday 11am-5pm  
Or by appointment







# Dining in Mesilla

**H**umble towns like Old Mesilla have recently become all the rage and are now favored by people around the world as preferred vacation spots. Old Mesilla has its own unique draw with local roots dating back to the early 1800s. Part of its appeal can be traced to the small-town dining experience. Whether it's the array of flavors, home-style cooking or friendly staff, there is plenty to love about Old Mesilla dining.

Among adobe brick architecture, viga and tin ceilings, foodies can dine where outlaws sat plotting their next getaway or enjoy a glass of wine in a room accompanied by ghosts. If this is your cup of tea, Old Mesilla is sure to suit you.

With a variety ranging from toasted corn tortillas filled with frijoles and red chile con carne topped with lettuce tomatoes and cheese, to the only dedicated beef aging room in New Mexico, and homemade green chile posole to freshly brewed coffees and pastries, there is always something to satisfy your Southern New Mexico food kick.



Located on the Plaza in Historic Old Mesilla

## DOUBLE EAGLE

THE CROWN JEWEL OF HISTORIC OLD MESILLA

Historic Building



Award Winning Margaritas



## THE REGION'S ONLY AGED STEAKS



## Peppers

On the Plaza

Traditional New Mexican  
recipes with a twist







EXPERIENCE

**MESILLA**  
2022

Mesilla restaurant, coffee house, tea shop, and bar owners created a fun, unique way for you to discover Mesilla.

Purchase a membership glass and/or card to receive benefits all year long at participating businesses, the V.I.P way.



@ExperienceMesilla

**GET YOUR 2022  
V.I.P. GLASS/PASS TODAY!**

### ANDELE'S DOG HOUSE

1983 Calle del Norte (575) 526-1271 [www.andelerestaurante.com](http://www.andelerestaurante.com)

### ANDELE'S RESTAURANT

1950 Calle del Norte (575) 526-9631 [www.andelerestaurante.com](http://www.andelerestaurante.com)

### CAFÉ DE MESILLA

2190 Avenida de Mesilla (575) 524-0000 [www.cafedemesilla.com](http://www.cafedemesilla.com)

### CHALA'S

2790 Avenida de Mesilla (575) 652-4143

### D.H. LESCOMBES WINERY & BISTRO

1720 Avenida de Mesilla (575) 524-2408 [www.stclairwinery.com](http://www.stclairwinery.com)

### DON FELIX CAFÉ

2290 Calle de Parian (575) 652-3007

### DOUBLE EAGLE RESTAURANT

2355 Calle de Guadalupe (575) 523-6700 [www.doubleeagleonline.com](http://www.doubleeagleonline.com)

### DRY POINT DISTILLERS

1680 Calle de Alvarez (575) 652-3414 [www.drypointdistillersnm.com](http://www.drypointdistillersnm.com)

### FARMESILLA

1840 Avenida de Mesilla (575) 642-4536 [www.farmesilla.com](http://www.farmesilla.com)

### HACIENDA DE MESILLA

1891 Avenida de Mesilla (575) 652-4953 [www.haciendademesilla.com](http://www.haciendademesilla.com)

### JOSEFINA'S OLD GATE CAFÉ

2261 Calle de Guadalupe (575) 525-2620 [www.josefinasoldgate.com](http://www.josefinasoldgate.com)

### LA POSTA DE MESILLA RESTAURANT & CANTINA

2410 Calle de San Albino (575) 524-3524 [www.laposta-de-mesilla.com](http://www.laposta-de-mesilla.com)

### LUNA ROSSA WINERY

1321 Avenida de Mesilla (575) 526-2484 [www.lunarossawinery.com](http://www.lunarossawinery.com)

### NM VINTAGE WINES, BEERS + CIGARS

2461 Calle de Principal (575) 523-9463 [www.NMVintageWines.com](http://www.NMVintageWines.com)

### PAISANO CAFÉ

1740 Calle de Mercado (575) 524-0211 [www.paisanocafe.com](http://www.paisanocafe.com)

### PEPPER'S CAFÉ

2355 Calle de Guadalupe (575) 523-4999 [www.double-eagle-mesilla.com](http://www.double-eagle-mesilla.com)

### SALUD! DE MESILLA

1800 Avenida de Mesilla (575) 527-2869 [www.SaluddeMesilla.com](http://www.SaluddeMesilla.com)

### SPOTTED DOG BREWERY

2920 Avenida de Mesilla (575) 650-2729 [www.spotteddogbrewery.com](http://www.spotteddogbrewery.com)

### THAI DELIGHT

2184 Avenida de Mesilla (575) 525-1900

### THE BEAN

2011 Avenida de Mesilla (575) 527-5155 [www.thebeanmesilla.com](http://www.thebeanmesilla.com)



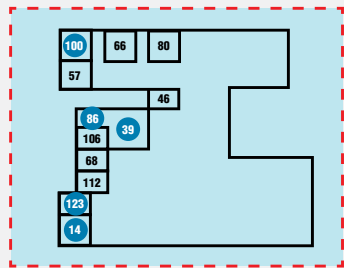
# Merchants

## in Mesilla

1. **A REAL MAN**  
2290 Calle de Parian
2. **ACTON ACADEMY OF LAS CRUCES**  
1730 Tierra de Mesilla
3. **ADOBE MODERN**  
2410 Calle de Principal
4. **ADOBE PATIO GALLERY & STUDIO**  
1765 Calle de Mercado
5. **ADVENTURE TRAVEL**  
2340 Avenida de Mesilla
6. **AGAVE ARTISTS**  
2250 Calle de San Albino
7. **ANDELE'S TORTILLERIA DE MESILLA**  
1950 Calle del Norte
8. **ANDELE'S RESTAURANT**  
1950 Calle del Norte
9. **ANDELE'S DOG HOUSE PATIO GRILL**  
1983 Calle del Norte
10. **ARTHRITIS TREATMENT SPECIALISTS**  
1770 Tierra de Mesilla
11. **B&J SAND AND GRAVEL**  
2929 Calle de Guadalupe
12. **B.W.D. CONSTRUCTION**  
2532 Calle del Norte
13. **BE INFUSED LLC**  
2410 Parian Ste. C
14. **BILLY THE KID GIFT SHOP**  
2385 Calle de Guadalupe
15. **BLACK RAT TATTOO**  
1901 Calle de Correo
16. **BLUE DOOR VENUE**  
1750 Calle de Mercado
17. **BOWLIN'S MESILLA BOOK CENTER**  
2360 Calle de Principal
18. **BUFFALO SWAG**  
2521 Avenida de Mesilla
19. **BUSTAMANTE FARM**  
2300 W. Union Ave.
20. **CAFÉ DE MESILLA**  
2190 Avenida de Mesilla
21. **CAFE DON FELIX**  
2410 Calle de Principal
22. **CASA BLANKA IMPORTS**  
1705 Tierra de Mesilla
23. **CASA BONITA**  
1820 Avenida de Mesilla
24. **CASA DE ROSIE**  
2140 Calle del Norte
25. **CHALA'S WOOD FIRED GRILL**  
2790 Avenida de Mesilla
26. **CHEEKY CHAPS**  
2521 Avenida de Mesilla
27. **CHEEKY CHICKS**  
2521 Avenida de Mesilla, Ste. C
28. **CO-LAB ARTISANS LOFT**  
2309-3 San Albino
29. **CREATIVE SPIRITS DISTILLERS**  
1680 Calle de Alvarez
30. **CUTTER GALLERY**  
2220 Parian
31. **DAKOTA DUKES WILD COYOTES**  
2470B Calle de Guadalupe
32. **DAYBREAK LIFE COACHING, LLC**  
1680 Alvarez, A-4
33. **DEBRA VANCE ART GALLERY**  
(575) 964-7700  
By Appointment
34. **DEL SOL**  
2322 Calle de Principal
35. **DESERT BOTANICALS**  
2488 Calle de Guadalupe
36. **DH LESCOBES**  
1720 Avenida de Mesilla
37. **DISCOUNT FIREWORKS**  
2531 Avenida de Mesilla
38. **DONA ANA ARTS COUNCIL, INC.**  
1740 Calle de Mercado
39. **DOUBLE EAGLE DE MESILLA**  
2355 Calle de Guadalupe
40. **EDWARD JONES & CO.**  
1701 Calle de Mercado, Ste. 4
41. **EL PATIO BAR**  
2171 Calle de Parian
42. **ENCHANTED BEAUTY**  
1680 Alvarez, Ste. C
43. **FARMESILLA**  
1840 Avenida de Mesilla
44. **FIRST AMERICAN BANK**  
1553 Avenida de Mesilla
45. **GADSDEN MUSEUM**  
1875 Boutz Rd.
46. **GALERIA AZUL**  
2335 Calle de Guadalupe
47. **GALERIA ON THE PLAZA**  
2310 Calle de Principal
48. **GARCIA HONEY FARM**  
2168 Calle de los Huertos
49. **GERALD DONAHUE (SURVEYING)**  
3010 Bowman Ave.
50. **HACIENDA DE MESILLA**  
1891 Avenida de Mesilla
51. **HEART OF THE DESERT PISTACHIOS**  
2350 Calle de Principal
52. **HIGH ON LIFE**  
1680 Calle de Alvarez
53. **HOME INSTEAD SENIOR CARE**  
2470C Calle de Guadalupe
54. **IMPRESSIONS DE MESILLA**  
2290 Calle de Parian
55. **INDIGO YOGA**  
2489 Calle de Principal
56. **IRONWORKS UNLIMITED**  
2293 Calle de Parian
57. **JULIENNE JEWELRY**  
2329 Calle de Guadalupe
58. **KNEADING TO HEAL**  
2222 Avenida de Mesilla
59. **LA CASA DE MARTINEZ**  
2140 Calle del Norte
60. **LA MORENA WALKING TOURS**  
2755 Calle de San Albino
61. **LA POSTA DE MESILLA**  
2410 Calle de San Albino
62. **LA ZIA**  
2350 Calle de Principal
63. **LAS CRUCES ACADEMY, INC.**  
1755 Calle de Mercado
64. **LAS CRUCES BULLETIN**  
1740 Calle de Mercado
65. **LAS CRUCES HOMES & LAND**  
1701 Calle de Mercado
66. **LE BOUTIQUE**  
2309 Calle de Guadalupe
67. **LEAVITT GROUP SOUTHWEST**  
1740 Calle de Mercado, Ste. E
68. **LEGACY PECANS & COMPANY**  
2456 Calle de Guadalupe
69. **LUCERO ENTERPRISES**  
2960 Camino Castillo
70. **LUNA ROSSA**  
1321 Avenida de Mesilla
71. **MATTEO**  
2410 Calle de San Albino
72. **MESILLA VALLEY FILM SOCIETY FOUNTAIN THEATRE**  
2469 Calle de Guadalupe
73. **MESILLA VALLEY FINE ARTS**  
2470 Calle de Guadalupe, Ste. A
74. **MJM RETAIL GROUP**  
2290 Calle de Parian, Ste. A
75. **MY RICH SISTER'S CLOSET**  
1937 Calle de Parian
76. **NAMBE, LLC**  
2109 Calle de Parian
77. **NEW MEXICO HANDMADE, INC**  
1910 Calle de Parian
78. **NM VINTAGE MARKET**  
2310 Avenida de Mesilla
79. **NM VINTAGE WINES, BEERS + CIGARS**  
2461 Calle de Principal
80. **OLD BARREL TEA SPICE COMPANY**  
2410 Calle Principal, Ste. C
81. **OLD MESILLA KENNEL**  
3036 S. Hwy. 28
82. **PAISANO CAFÉ**  
1740 Calle de Mercado, Ste. C
83. **PALACIO BAR**  
2600 Avenida de Mesilla
84. **PAT TAYLOR, INC.**  
2171 Calle de los Huertos
85. **PECAN MESILLA**  
2806 Valle Grande
86. **PEPPERS**  
2355 Calle de Guadalupe
87. **PI PILATES**  
2521 Avenida de Mesilla
88. **PISTOLEROS BARBER SHOP**  
1701 #4 Calle de Mercado
89. **PLANET FIREWORKS, LLC**  
Calle de Mercado
90. **PRIETO IMPORTS**  
2230 Avenida de Mesilla
91. **RINCON DE MESILLA**  
2488 Calle De Guadalupe
92. **RISTRAMNN CHILE CO.**  
2531 Avenida de Mesilla
93. **RUBY SUN**  
2301 Calle de San Albino
94. **SALON DE MESILLA**  
2172 Calle de Santiago
95. **SALUD! DE MESILLA**  
1800 Avenida de Mesilla, Ste. B
96. **SAN BASILICA GIFT SHOP**  
2070 Calle de Santiago
97. **SHORTY'S FOOD MARKET**  
2920 S. Hwy. 28
98. **SIESTA RV PARK**  
1551 Avenida de Mesilla
99. **SILVER ASSETS**  
1948 Calle de Santiago
100. **SILVER STUDIO 925**  
2309 Calle de Guadalupe
101. **SILVIA MARINAS ART CONSERVATORY**  
2327 Santa Ana
102. **SINUATE MEDIA**  
1910 Calle de Parian
103. **SOUTHWEST VISIONS SPECIALISTS**  
1680 Alvarez, Ste. D
104. **SPA 232 MED SPA & BEAUTY LOUNGE**  
2220 Calle de Parian
105. **SPOTTED DOG BREWERY, LLC**  
2900 S. Hwy 28
106. **STARAH'S JEWELS**  
2365 Calle de Guadalupe
107. **STEINBORN & ASSOCIATES**  
1885 Boutz Rd.
108. **SUN VISTA CONSTRUCTION**  
2640 Calle del Oeste
109. **THAI DELIGHT**  
2184 Avenida de Mesilla
110. **THE BEAN**  
2011 Avenida de Mesilla
111. **THE BEAN AT JOSEFINA'S**  
2261 Calle de Guadalupe
112. **THE CHOCOLATE LADY**  
2379 Calle de Guadalupe
113. **THE EMERALD ISLE**  
1701 Calle de Mercado, Ste. 2
114. **THE HAIR AND BODY SHOP**  
2222 Avenida de Mesilla
115. **THE MESSY ARROW**  
2309 San Albino B
116. **THE POTTERIES**  
2260 Calle de Santiago
117. **THUNDERBIRD DE LA MESILLA**  
2380 Calle de Principal
118. **TIS THE SEASON DE MESILLA**  
2402 Avenida de Mesilla
119. **TRU ART OF THE EARTH**  
2411 Calle de San Albino
120. **VALLEY PLUMBING**  
2800 Avenida de Mesilla
121. **VIGIL & ASSOC. ARCHITECTS**  
1765 Calle de Mercado
122. **WESTMARK PRODUCTIONS, INC.**  
3120 McDowell
123. **WILD WEST EXPRESS-O**  
2385 Calle de Guadalupe



# Old Mesilla





# 2022 Calendar of events

## Weekly

### ARTS/CRAFTS & FARMERS MARKET

**Fridays:** 11:00AM - 4:00PM

**Sundays:** 9:00AM - 4:00PM

## April

**18<sup>TH</sup>** 3rd Annual Bellas Artes

**19<sup>TH</sup>** Sin Fronteras  
Multicultural Artisan  
Market

## June

**5<sup>TH</sup>, 12<sup>TH</sup>** Summer Music  
Series

**19<sup>TH</sup> & 26<sup>TH</sup>**  
**20<sup>TH</sup>** Raft the Rio Race

## September

**12<sup>TH</sup>** Diez y seis de  
Septiembre Parade  
& Fiesta

## November

**1<sup>ST</sup>** Dia de los Muertos

**7<sup>TH</sup>** Native American  
& **8<sup>TH</sup>** Art Show

**11<sup>TH</sup>** Veteran's Day Ceremony

**16<sup>TH</sup>** El Tratado de La Mesilla

## February

**12<sup>TH</sup>** Cupid's Chase 5K

**12<sup>TH</sup>** For the Love of Art Show

## May

**2<sup>ND</sup> & 3<sup>RD</sup>** Cinco de Mayo Fiesta

**20<sup>TH</sup>** Ride of Silence

## July

**3<sup>RD</sup> & 10<sup>TH</sup>** Summer Music Series

**4<sup>TH</sup>** Fireworks Display

## October

**3<sup>RD</sup> & 4<sup>TH</sup>** Jazz Happening

**10<sup>TH</sup>** Los Leones Car Show

**30<sup>TH</sup>** Halloween Haunted  
House/Carnival

**30<sup>TH</sup> & 31<sup>ST</sup>** Dia de los Muertos

## December

**4<sup>TH</sup>** Christmas Tree  
Lighting

**24<sup>TH</sup>** CHRISTMAS EVE  
on the Plaza

For more information go to: [www.mesillanm.gov](http://www.mesillanm.gov)  
(Dates scheduled to change depending on availability.)

# Political History

**M**esilla was named county seat of Doña Ana County in 1856 and incorporated in 1861. In 1958, Mesilla reincorporated. On Sunday, August 27, 1871, organized members of both the Democratic and Republican Parties announced rallies on the Plaza. The parties agreed to meet in different areas. Agitators from both parties wanted to close their respective meetings with a procession around the Plaza. Whiskey flowed freely. When the two processions met, shots were fired and several fights broke out. Nine men were killed and between 40 and 50 were wounded. Troops were summoned from Fort McRae to restore order and remained a few nights until calm was restored. With no judge in the district at the time, a judge was summoned from another district to hold an investigation. After three days, he decided it was too dangerous for any investigation and returned home without any action and no one was ever convicted.

For more Old Mesilla  
history visit  
[www.mesillanm.gov](http://www.mesillanm.gov)



## Shop Local - Shop Handmade

Featuring 20 Local Artist  
Jewelry • Candles • Apparel • Home Decor

MAP  
28



Shop at:

[f Co-Lab Artisans Loft](https://www.facebook.com/colab.artisans.loft)

[@colab.artisans.loft](https://www.instagram.com/colab.artisans.loft)



2309-3 Calle de San Albino, Mesilla NM

Mesilla is  
NEW MEXICO True







# Arts & Crafts

## Farmer's Market WEEKLY FRIDAYS & SUNDAYS

Set in our historic plaza, Old Mesilla's Mercado is one of America's oldest markets since 1857.

More than 155 years later, our Mercado continues to be at the center of our town showcasing finely hand-crafted jewelry, original artwork and locally grown produce.

**Fridays** - 11:00 a.m. to 4:00 p.m.

**Sundays** - 9:00 a.m. to 4:00 p.m.

Hours subject to change, please visit our website [www.mesillanm.gov](http://www.mesillanm.gov) or visit our Facebook page for updates.



# Galleries

The Mesilla art scene is always evolving with local artist representing our great region with fine skills, making our Town, a thriving art and culture destination. You will find Native American Art, Sculptures, Paintings, Jewelry, Clothing and much more. We invite all to visit our Galleries and take a little of us back with you.

## ADOBE PATIO GALLERY & STUDIO

1765 Calle de Mercado

## AGAVE ART GALLERY

2250 Calle de San Albino

## DEBRA VANCE ART GALLERY

(575) 964-7700 By Appointment

## GALERIA AZUL

2335 Calle de Guadalupe

## GALERIA ON THE PLAZA

2310 Calle de Principal

## MESILLA VALLEY FINE ARTS

2470 Calle de Guadalupe, Ste. A



Mesilla Valley  
Fine Arts  
Gallery

MAP  
73

Our regional artists offer original art in many media, including: painting, pastel, drawing, photography, jewelry, ceramics, fabric collage, wood-turning, stained glass, gourds, basketry and more - as well as note cards and prints.

Open 7 days a week

10am - 5pm

Closed:

Thanksgiving & Christmas

575.522.2933

2470-A

Calle de Guadalupe



## SOUTHWEST NM'S ARTHOUSE CINEMA

MAP  
72



home for independent films  
and community events  
for over thirty years

presented by  
**the Mesilla Valley  
Film Society**

half a block from the plaza  
2469 Calle de Guadalupe

[MESILLAVALLEYFILM.ORG](http://MESILLAVALLEYFILM.ORG)



## a little more history

Many of the structures in Mesilla's historic district have been classified as "significant" on the National Register of Historic Places because they are either architecturally outstanding or exceptionally important in the history of the community.



### BASILICA OF SAN ALBINO

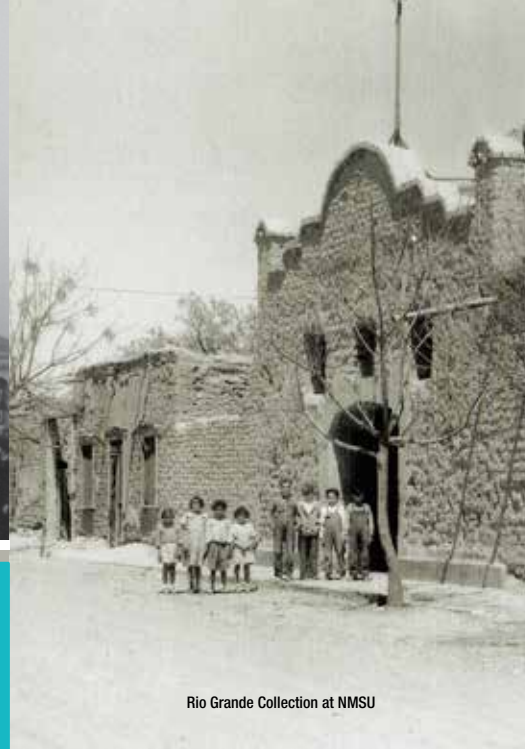
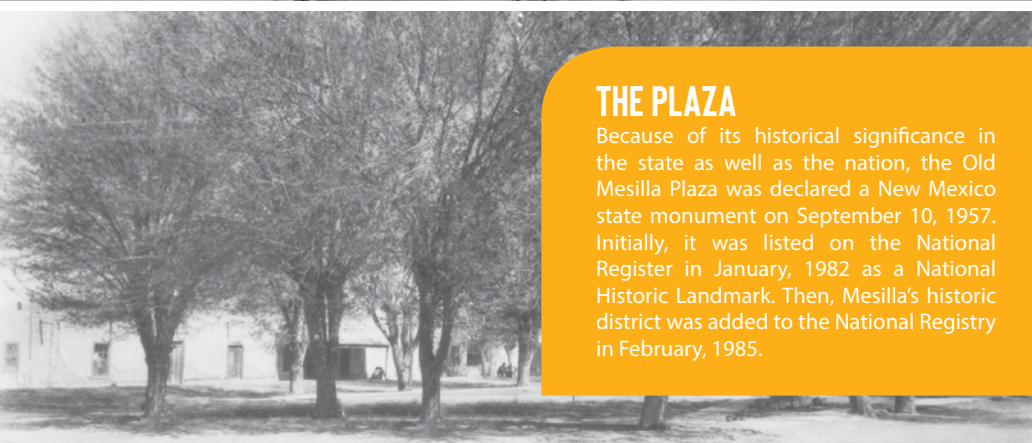
Around 1855 San Albino church was built at the north end of the plaza. The original church was adobe and had only one steeple. The present church was built in the early 1900s around the old adobe church. When it was finished, the old church was dismantled inside the new church and carried out the front door. The church was named on San Albino Day in early March, a date associated with the completion of a local water ditch that would provide irrigation to the settler's communal fields. San albino is appropriately a water saint.

Location: 2280 Calle de Principal, Mesilla, NM 88046 • 575-526-9349



### THE PLAZA

Because of its historical significance in the state as well as the nation, the Old Mesilla Plaza was declared a New Mexico state monument on September 10, 1957. Initially, it was listed on the National Register in January, 1982 as a National Historic Landmark. Then, Mesilla's historic district was added to the National Registry in February, 1985.



Rio Grande Collection at NMSU

### FOUNTAIN THEATRE

For 25 years, the Mesilla Valley Film Society has been presenting the best independent, foreign and documentary films in the southwest at the Fountain Theatre, one-half block off the plaza. The theatre has a long history of entertaining the locals. After buying the building in 1905, Albert Fountain Jr. began producing plays, vaudeville, light opera, and lantern slide shows. It has operated as both a live theatre and cinema since that time. In 1989 the MVFS began managing the venue. There are screenings every night plus matinees on weekends. For a complete schedule, ticket prices and membership information, go to [www.mesillavalleyfilm.org](http://www.mesillavalleyfilm.org).

Location: 2469 Calle de Guadalupe, Mesilla, NM 88046 • 575-524-8287

# STAY CONNECTED ANYTIME, ANYWHERE!

[www.mesillanm.gov](http://www.mesillanm.gov)





# Billy the kid



**B**orn Henry McCarty; September 17 or November 23, 1859 – July 14, 1881, also known by the pseudonym William H. Bonney, was an outlaw and gunfighter of the American Old West, who killed eight men before he was shot and killed at the age of 21. He also fought in New Mexico's Lincoln County War, during which he allegedly committed three murders.

McCarty was orphaned at the age of 15. His first arrest was for stealing food, at the age of 16, in late 1875. Ten days later, he robbed a Chinese laundry and was again arrested, but escaped shortly afterwards. He fled from New Mexico Territory into neighboring Arizona Territory, making himself both an outlaw and a federal fugitive. In 1877, McCarty began to call himself "William H. Bonney". Two versions of a wanted poster dated September 23, 1875, refer to him as "Wm. Wright, better known as Billy the Kid".

After killing a blacksmith during an altercation in August 1877, McCarty became a wanted man in Arizona and returned to New Mexico, where he joined a group of cattle rustlers. He became well known in the region when he joined the Regulators and took part in the Lincoln County War of 1878. McCarty and two other Regulators were later charged with killing three men, including Lincoln County Sheriff William J. Brady and one of his deputies.

McCarty's notoriety grew in December 1880 when the Las Vegas Gazette, in Las Vegas, New Mexico, and The Sun, in New York City, carried stories about his crimes. Sheriff Pat Garrett captured McCarty later that month. In April 1881, McCarty was tried for and convicted of Brady's murder, and was sentenced to hang in May of that year. He escaped from jail on April 28, killing two sheriff's deputies in the process and evading capture for more than two months. Garrett shot and killed McCarty, by then age 21, in Fort Sumner on July 14, 1881. During the following decades, legends grew that McCarty had survived, and a number of men claimed to be him. Billy the Kid remains one of the most notorious figures from the era, whose life and likeness have been frequently dramatized in Western popular culture.



Sheriff Pat Garrett

## BILLY THE KID

• Gift Shop & Express-o •



### ANNIVERSARY

THE SILVERSMITH, INC.

- Largest Billy the Kid memorabilia store in the area
- Local, Southwest and Fine Art
- Local and Native American Jewelry

**A variety of Savory  
Homemade Fudge**



**Great Coffee and  
Freshly Roasted  
Coffee Blends**



Scan and  
Visit Us Online



2385 Calle de Guadalupe  
Mesilla, NM 88046 • 575-523-5561

[www.Mesilla.com](http://www.Mesilla.com)

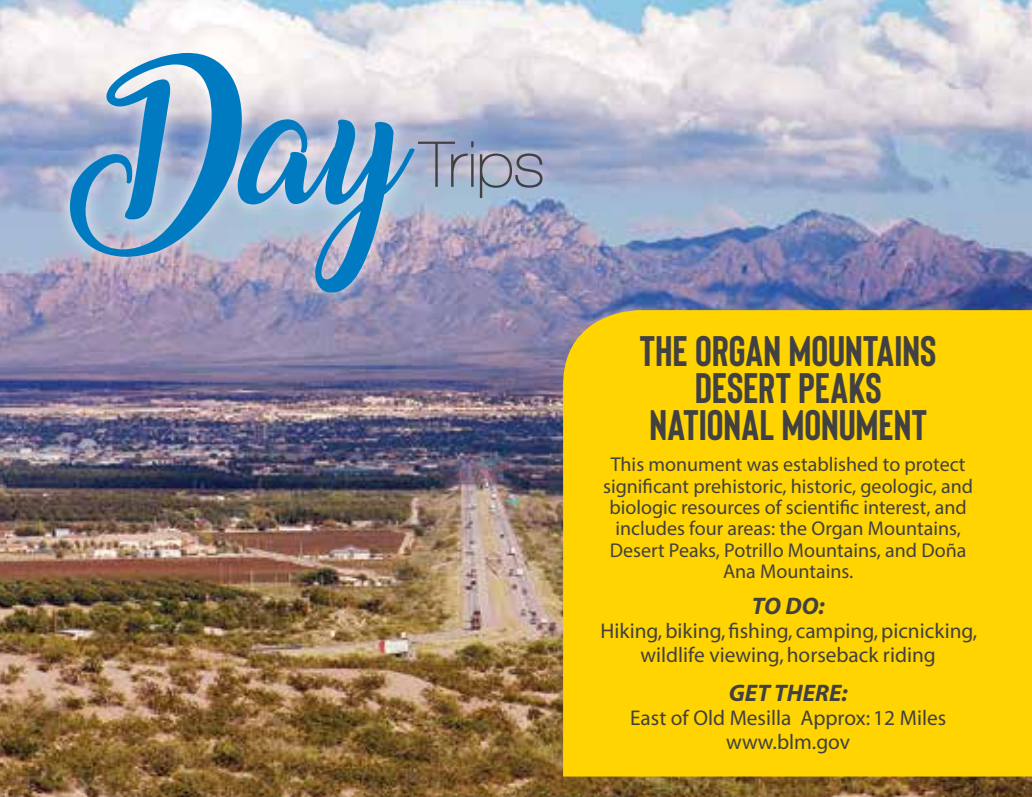
Billy the Kid Gift Shop is located in one of the most historic buildings in New Mexico.

In 1861 it was the state capitol of the New Mexico and Arizona Territories during the Civil War. After the Civil War, it was the county courthouse and jail. It was here that Billy the Kid was tried and sentenced to hang.

Today it houses one of the most complete Gift Shops in the area. Here you can find knives for him, jewelry for her, toys for the youngins, sweet treats, souvenirs, gifts and more. Come in and listen to the secrets of the past and don't forget to take a piece of history with you.



# Day Trips



## THE ORGAN MOUNTAINS DESERT PEAKS NATIONAL MONUMENT

This monument was established to protect significant prehistoric, historic, geologic, and biologic resources of scientific interest, and includes four areas: the Organ Mountains, Desert Peaks, Potrillo Mountains, and Doña Ana Mountains.

### TO DO:

Hiking, biking, fishing, camping, picnicking, wildlife viewing, horseback riding

### GET THERE:

East of Old Mesilla Approx: 12 Miles  
[www.blm.gov](http://www.blm.gov)

## ELEPHANT BUTTE LAKE STATE PARK

### TO DO:

Camping, fishing, boating or just being outdoors

### GET THERE:

North of Las Cruces on I-25 Approx: 70 miles  
(575) 744-5923 [www.emnrd.state.nm.us](http://www.emnrd.state.nm.us)

As New Mexico's largest State Park, there is still plenty of water and plenty of beach room left in the lake. Elephant Butte Lake can accommodate watercraft of many styles and sizes: kayaks, jet skis, pontoons, sailboats, ski boats, cruisers, and houseboats. Besides sandy beaches, the State Park offers restrooms, picnic areas, playgrounds, and developed sites with electric and water hook-ups for RV's.



By Stillehler, via Wikimedia Commons

## NEW MEXICO MUSEUM OF SPACE HISTORY

The sole mission of the museum is to educate the people of New Mexico and our visitors from around the world in history, science, and technology of space. The museum stresses the significant role that the state of New Mexico has played in the development of the U.S. Space Program through collecting, preserving, and interpreting significant artifacts relevant to the history of space. While here, visit the Clyde W. Tombaugh IMAX Dome Theater and Planetarium. Open daily from 9 am-5 pm (closed Thanksgiving and Christmas). Admission is \$4-\$6.

### GET THERE:

East of Old Mesilla on Hwy. 70.  
3198 State Rte 2001, Alamogordo, NM.  
Approx: 65 Miles  
(877) 333-6589 [www.nmspacemuseum.org](http://www.nmspacemuseum.org)



By David Jones, via Wikimedia Commons

## WHITE SANDS NATIONAL MONUMENT

Like no place else on earth, the dunes rise from the heart of the Tularosa Basin is one of the world's great natural wonders - the glistening white sands of New Mexico. Great wave-like dunes of gypsum sand have engulfed 275 square miles of desert, creating the world's largest gypsum dunefield.

### TO DO:

Day picnicking, sledding, horseback riding, bicycling, wildlife viewing, photography

### GET THERE:

East of Old Mesilla Approx: 55 Miles  
(575) 479-6124 • [www.nps.gov](http://www.nps.gov)



By Land Rover MENA, via Wikimedia Commons

## SPACEPORT AMERICA VISITOR CENTER TRUTH OR CONSEQUENCES

Visitors begin their journey at the Spaceport America Visitor Center, a historic adobe building located at 301 S. Foch St., Truth or Consequences, NM 87901. A wonderful contrast of the old frontier meeting the new and packed with exciting educational and interactive space exhibits. Here visitors can purchase tour tickets and official Spaceport America merchandise prior to journeying out to the Spaceport America site on rolling multi-media theater shuttles.

### GET THERE:

North on I-25 Approx: 65 miles  
30 miles East of Truth  
or Consequences, NM in Upham  
(575) 267-8888  
[www.spaceportamerica.com](http://www.spaceportamerica.com)

## GERONIMO TRAIL NATIONAL SCENIC BYWAY

### TO DO:

Sightseeing at ghost towns, shopping, eateries and hiking  
(575) 894-1968 • [www.geronimotrail.com](http://www.geronimotrail.com)

The Geronimo Trail Scenic Byway was established to showcase and preserve the Corridor area for its historic multi-cultural heritage and outstanding natural resources. Starting and ending in the Gila Wilderness, this 150 mile byway goes through mountain forests and dry deserts, to the largest lakes in the state. The Geronimo Trail Visitors Center, near the center of the designated Byway, is located at 301 S. Foch, in Truth or Consequences.





By Christina Vaquera

## DRIPPING SPRINGS NATURAL AREA

This area has over four miles of easy hiking trails, including the Dripping Springs Trail, which shows off desert scrub and low elevation pinon-juniper and oak woodlands. The area also boasts excellent wildlife viewing opportunities. It offers very good year-round viewing of desert mule deer, coyote, and occasional sightings of mountain lion.

### TO DO:

Camping, picnicking, wildlife viewing

### GET THERE:

East of Old Mesilla Approx: 12 Miles  
(575) 525-4300 [www.blm.gov](http://www.blm.gov)



By Zereskh, via Wikimedia Commons

## GILA NATIONAL FOREST

The Gila is 3.3 million acres of forested hills, majestic mountains and range land (6th largest National Forest in the country). It is probably best known for its wilderness areas, in particular the Gila Wilderness - the first wilderness in the United States. The magnificent mountain scenery, cool summer temperatures and relatively warm winters permit a wide range of recreational opportunities during all seasons.

### TO DO:

Camping, hiking, picnicking, fishing, horseback riding, wildlife, big game hunting.

### GET THERE:

West on I-10 to Deming bypass to Silver City. Approx: 70 miles  
(575) 388-8201 • [www.fs.usda.gov](http://www.fs.usda.gov)

## MESILLA VALLEY BOSQUE STATE PARK

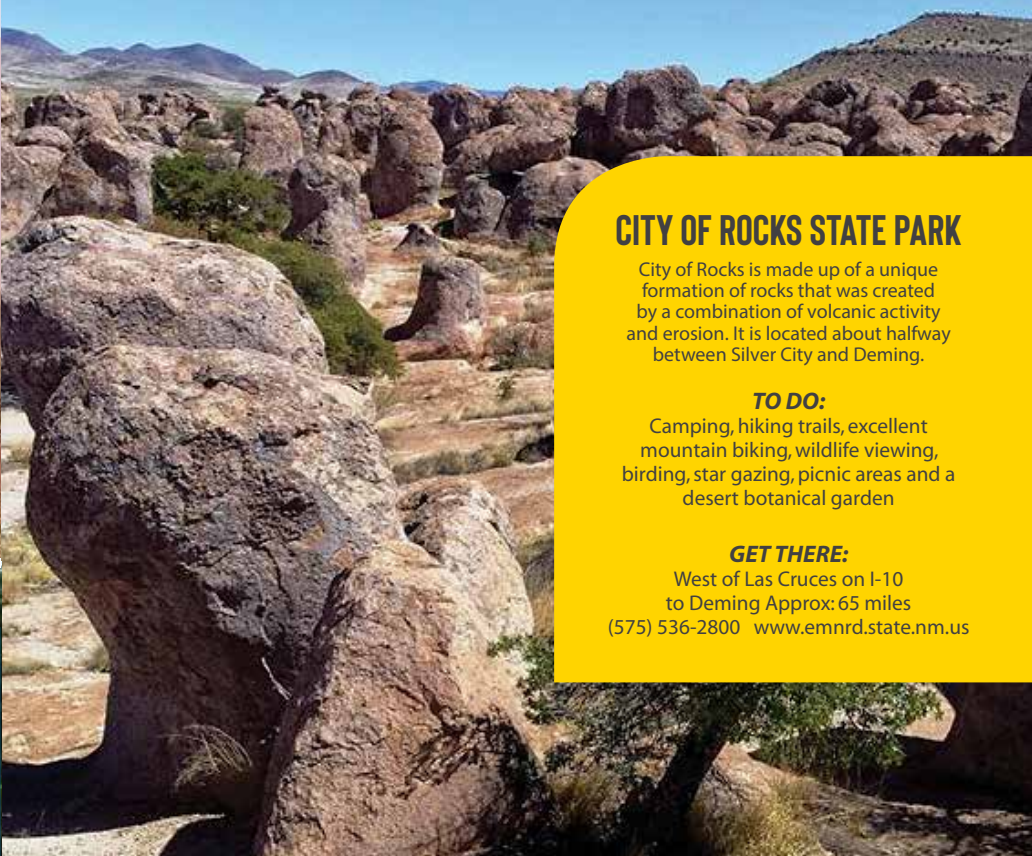
This day-use park is located along the Rio Grande.

### TO DO:

Bird watching, trails and education programs

### GET THERE:

West of Old Mesilla Approx: 2 Miles  
5000 Calle Del Norte (575) 523-4398  
[www.nmparks.com](http://www.nmparks.com)



## CITY OF ROCKS STATE PARK

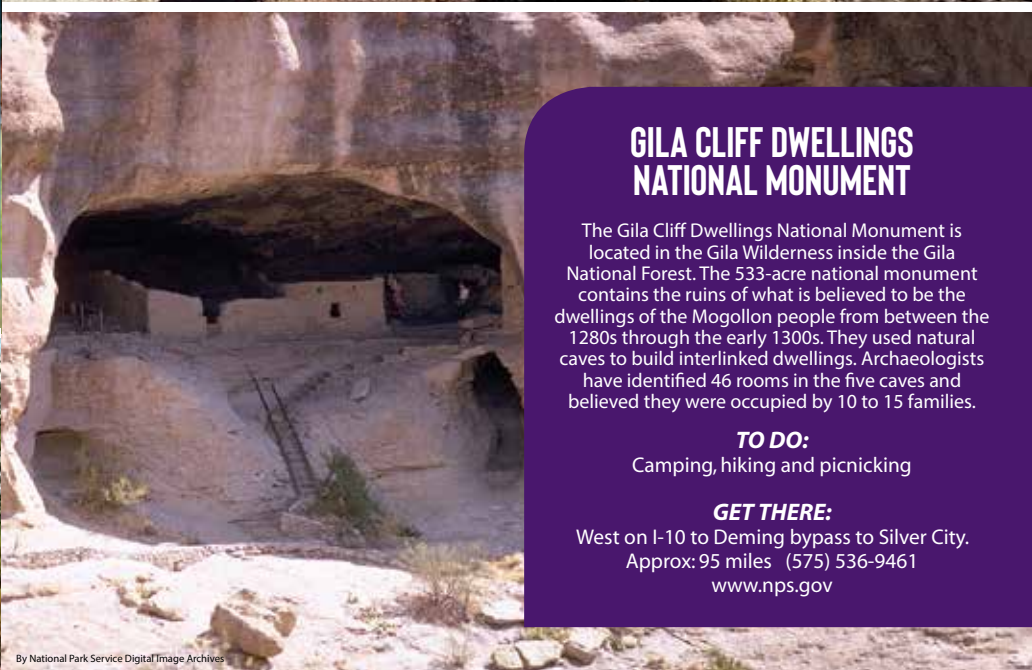
City of Rocks is made up of a unique formation of rocks that was created by a combination of volcanic activity and erosion. It is located about halfway between Silver City and Deming.

### TO DO:

Camping, hiking trails, excellent mountain biking, wildlife viewing, birding, star gazing, picnic areas and a desert botanical garden

### GET THERE:

West of Las Cruces on I-10 to Deming Approx: 65 miles  
(575) 536-2800 [www.emnrd.state.nm.us](http://www.emnrd.state.nm.us)



## GILA CLIFF DWELLINGS NATIONAL MONUMENT

The Gila Cliff Dwellings National Monument is located in the Gila Wilderness inside the Gila National Forest. The 533-acre national monument contains the ruins of what is believed to be the dwellings of the Mogollon people from between the 1280s through the early 1300s. They used natural caves to build interlinked dwellings. Archaeologists have identified 46 rooms in the five caves and believed they were occupied by 10 to 15 families.

### TO DO:

Camping, hiking and picnicking

### GET THERE:

West on I-10 to Deming bypass to Silver City. Approx: 95 miles (575) 536-9461  
[www.nps.gov](http://www.nps.gov)

By National Park Service Digital Image Archives





PLACE	ADDRESS	PHONE	WEBSITE
CASA DE ROSIE	2140 Calle del Norte	(575) 993-1410	www.casaderosie.com
HACIENDA DE MESILLA	1891 Avenida de Mesilla	(575) 652-4953	www.haciendademesilla.com
JOSEFINA'S OLD GATE	2261 Calle de Guadalupe	(575) 525-2620	www.josefinasoldgate.com

#### RV & CAMPGROUNDS

Coachlight Inn	301 S. Motel Blvd.	(575) 386-0636	www.zianet.com/coachlight
Dalmon's RV Park	2224 S. Valley Dr.	(575) 523-2992	
Hacienda RV	740 Stern Dr.	(575) 528-5800	www.haciendarv.com
Las Cruces KOA	814 Weinrich Rd.	(575) 526-6555	www.koa.com
Siesta RV Park	1551 Avenida de Mesilla	(575) 523-6816	www.siestarvpark.com
Sunny Acres RV Park	595 N. Valley Dr.	(575) 524-1716	www.sunnyacresrv.com

#### BED & BREAKFAST

Lundeen Inn of the Arts	618 S. Alameda Blvd.	(575) 526-3326	www.innofthearts.com
-------------------------	----------------------	----------------	----------------------

#### HOTELS/MOTELS

A Day's End Motel	755 N. Valley Dr.	(575) 524-7753	
America's Best Value Inn	901 Avenida de Mesilla	(575) 524-8603	www.americasbestvalueinn.com
Big Chile Inn	2160 W. Picacho Ave.	(575) 524-8627	www.abvilascruces.com
Best Western Mission Inn	1765 S. Main St.	(575) 524-8591	www.bwmissioninn.com
Bruce Motel	800 S. Main St.	(575) 526-1644	
Budget Inn (35 rooms)	2255 W. Picacho Ave.	(575) 523-0365	
Century 21 Motel	2454 N. Main St.	(575) 524-9626	
Coachlight Inn	301 S. Motel Blvd.	(575) 526-3301	www.zianet.com/coachlight/
Comfort Inn West	1300 Avenida de Mesilla	(575) 527-1050	www.comfortinn.com
Comfort Suites – Triviz	2101 S. Triviz Dr.	(575) 522-1300	www.comfortsuites.com

PLACE	ADDRESS	PHONE	WEBSITE
Comfort Suites – Telshor	236 N. Telshor Blvd.	(575) 521-1030	www.choicehotels.com
Days Inn	755 Avenida de Mesilla	(575) 636-1602	www.daysinn.com
Courtyard by Marriott	456 E. University Ave.	(575) 526-1722	www.marriott.com
Desert Lodge	1900 West Picacho Ave.	(575) 524-1925	
Desert Oasis Inn	1765 W. Picacho Ave.	(575) 523-6858	
Drury Inn & Suites	1631 Hickory Loop	(575) 523-4100	www.druryhotels.com
Econo Lodge	2585 S. Valley Dr.	(575) 527-2000	www.econolodge.com
Fairfield Inn	2101 Summit Court	(575) 522-6840	www.marriott.com
Hampton Inn & Suites	2350 E. Griggs Ave.	(575) 527-8777	www.hamptoninn.com
Hampton Inn & Suites	1641 Hickory Loop	(575) 541-8777	www.hamptoninn3.hilton.com
Hilton Garden Inn	2550 S. Don Roser Dr.	(575) 522-0900	www.hiltongardeninn.com
Holiday Inn Express & Suites Las Cruces North	2142 Telshor Court	(575) 522-0700, (888) HOLIDAY	www.holidayinnexpress.com
Holiday Inn Express & Suites	2635 S. Valley Dr.	(575) 527-9947	www.holidayinnexpress.com
Home 2 Suites by Hilton	1120 N. Telshor	(575) 527-6491	www.home2suites3.hilton.com
Hotel Encanto de Las Cruces	705 S. Telshor Blvd.	(575) 522-4300	www.hotelencanto.com
La Quinta Inn de Mesilla	790 Avenida de Mesilla	(575) 524-0331	www.laquintalascrucesmesilla-valley.com
La Quinta Inn & Suites Organ Mountain	1500 Hickory Dr.	(575) 523-0100, (800) 531-5900	www.laquintalascrucesorganmt.com
Motel 6 Telshor	2120 Summit Court	(575) 525-2055	www.motel6.com
Motel 9 Las Cruces	235 La Posada Ln.	(575) 525-1010	
Quality Inn & Suites	2200 S. Valley Dr.	(575) 524-4663	
Ramada Hotel & Conference Center	201 E. University Ave.	(575) 613-4693	www.ramadalascruces.com
Royal Host Motel	2146 W. Picacho Ave.	(575) 524-8536	
Sands Motel	1655 S. Main St.	(575) 524-7791	
Sleep Inn	2121 S. Triviz Dr.	(575) 522-1700	www.sleepinn.com
Staybridge Suites	2651 Northrise Dr.	(575) 521-7999	www.lascruces-hotel.com
SpringHill Suites by Marriott	1611 Hickory Loop	(575) 541-8887	www.marriott.com
Super 8 – East / White Sands Area	3405 Bataan Memorial W.	(575) 382-1490	www.super8.com
Super 8 – South	245 La Posada Lane	(575) 448-2004	www.super8.com
Town House Motel	2205 W. Picacho Ave.	(575) 524-7733	
Town Place Suites	2143 Telshor Court	(575) 532-6500	www.marriott.com
Wood Spring Suites LC	2080 S. Triviz Dr.	(575) 528-2046	
Western Inn	2155 W. Picacho Ave.	(575) 523-5399	

# Museums

## THE J. PAUL TAYLOR VISITOR CENTER

The visitor center is located inside Mesilla Town Hall. Named after former New Mexico State Representative and Mesilla resident J. Paul Taylor, the visitor center is staffed by "Amigos" who are dedicated volunteers that love Mesilla and are eager to promote the culture and historical qualities that make Old Mesilla unique. The local Disabled American Veterans (DAV) Chapter 38 is also located in the Visitors Center, providing services to Disabled Veterans and their families.

The J. Paul Taylor Visitor Center is equipped with brochures, videos, restaurant menus and other interesting information on the area. The center has a great collection of old photos that adorn the walls dating back to the late 1800's.

Open Monday through Friday 8 a.m. to 5 p.m.  
2231 Avenida de Mesilla • (505) 524-3262 ext. 117

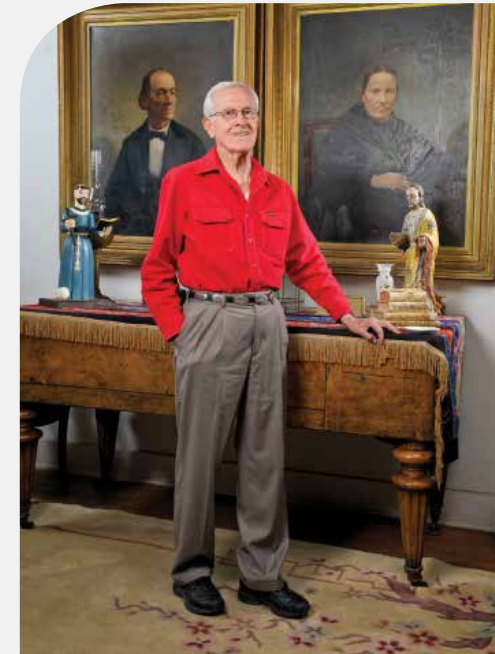


## THE TAYLOR-BARELA REYNOLDS-MESILLA STATE MONUMENT

Known historically as the Barela-Reynolds Properties, the Taylor donation will become the newest State Monument. The properties were constructed in the late 1850s and listed on the State Register of Historic Places in 1970 and added to the National Register of Historic Places in 1978. In 1958, the Mesilla Plaza was designated a State Monument and today remains on the system's list.

Although an official State Monument, Mr. & Mrs. Taylor have reserved a life-estate that permits them occupancy of the property for the duration of their lives.

Shown by appointment. If you are interested in a tour, please contact us at:  
ftfm.mesilla.nm@gmail.com



## GADSDEN MUSEUM

This classic Territorial Style house was built around 1860 and enlarged in the 1870s. It is an example of a classic territorial style home with a central hallway with rooms to either side. It was established as a museum and dedicated to Col. Albert J. Fountain in 1931. With a replica of the old Mesilla jail where Billy the Kid was held while awaiting trial and featuring artifacts dating back to the 1500s, the Gadsden Museum holds private collections of many historic items. It is now operated by Mary Alexander Bird, an 8th generation Mesillera.

Shown by appointment (575) 526-6293.





# Facilities

Town of Mesilla  
Facilities and Center

## ADMINISTRATIVE DEPARTMENT

**Town Clerk/Treasurer/HR**  
(575) 524-3262 Ext: 105

**Deputy Town Clerk/Treasurer/HR**  
(575) 524-3262 Ext: 115

**Accounts Payable**  
(575) 524-3262 Ext: 115

**Utility Clerk/Receptionist**  
(575) 524-3262 Ext: 100

## PUBLIC WORKS DEPARTMENT

**Public Works Department Head:**  
(575) 524-3262 Ext: 109

## TOWN OF MESILLA FIRE DEPARTMENT

In an emergency call 9-1-1.  
To dispatch a fire unit call Central  
Dispatch at (575) 526-0795

## MARSHAL'S DEPARTMENT

In an emergency call 9-1-1.  
To dispatch a deputy call Central  
Dispatch at (575) 526-0795

## COMMUNITY DEVELOPMENT DEPARTMENT

(575) 524-3262 Ext: 104

## COMMUNITY AND SPECIAL EVENTS

(575) 524-3262 Ext: 116

## MUNICIPAL COURT

### Office Hours:

Mondays & Thursdays – 8 a.m. to 5 p.m.  
Fridays – 10 a.m. to 2 p.m.  
Closed on Town Hall Holidays

### Court Hours:

Mondays – 8 a.m. to 12 p.m.  
Tuesdays – 2 to 4 p.m.  
Wednesdays – 1 to 4 p.m.

Trials are held Monday through Friday as scheduled.  
For more information (575) 524-1091

## COMMUNITY CENTER

2251 Calle de Santiago, Mesilla NM 88046



*We Are Proud To Be a New Mexico Shop Since 2011.  
Offering you the Best Quality of Solid Sterling Silver Jewelry  
And Southwest Turquoises.  
Exclusively Made By Silver Studio. 925*



**Please Come By And Check Us Out At The Historic Mesilla Plaza!**  
2309 Calle De Guadalupe, Mesilla NM 88046 • (575) 639-0685  
Daily 10am-6pm  
silver-studio-925@live.com  
silverstudio.925





# La Posta de Mesilla

## FIESTA YEAR 'ROUND

Famed for Mexican Food, Steaks and Margaritas since 1939

Award Winning Margaritas and Over 100 Tequilas & Mezcal

Outdoor Patio and Adobe Cantina y Tequileria

La Posta Fiesta-To-Go

Private Dining for Family Gatherings,  
Corporate Events, Weddings, Rehearsal Dinners,  
Graduations, Birthdays Y Mas!



Still Everyone's Favorite Stop on the Old Butterfield Stagecoach Line

Located on the Plaza in Historic Old Mesilla

Open 7 Days a Week 11am • Breakfast 8am - 11am Saturday & Sunday

575-524-3524 • [www.laposta-de-mesilla.com](http://www.laposta-de-mesilla.com)

